

Rock Hall Yacht Club
83rd Annual LOG CANOE REGATTA
JULY 15 & 16, 2023
SAILING INSTRUCTIONS

- **RULES:** The Current Racing Rules of Sailing and the Rules of the Chesapeake Bay Log Canoe Association (CBLCA) will govern the race; wherever a rule conflict may occur the CBLCA rule will govern.
- **ENTRIES:** Register online at RockHallYachtClub.org. All competitors are welcome at the RHYC after racing each day.
- **RENDEZVOUS:** In the vicinity of LC mid channel marker for Langford Creek on the Chester River.
- **NOTICES TO COMPETITORS:** There will be no official regatta notice board.
- **COMMITTEE BOAT:** 32' Mabry "Swan"

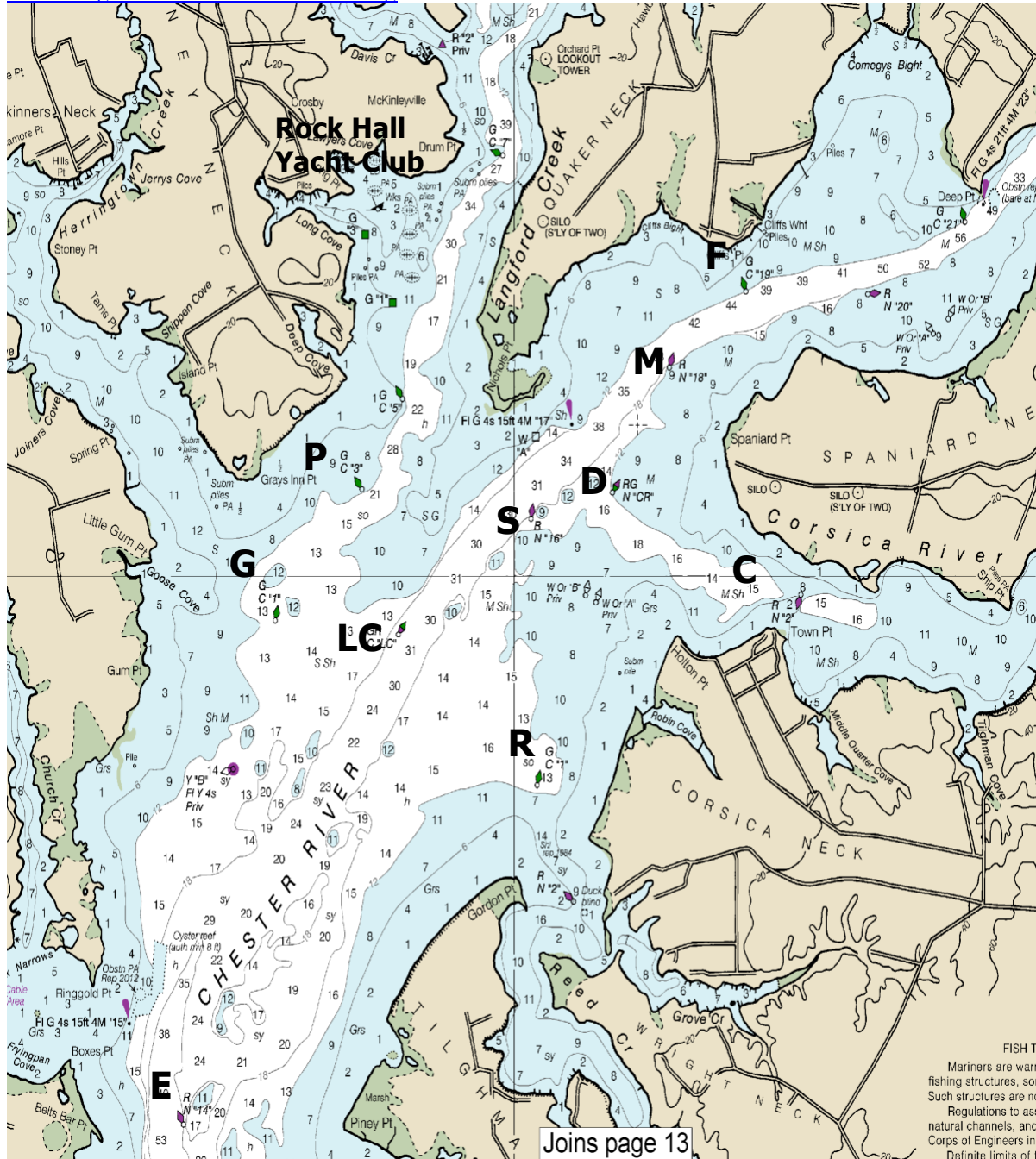
PRO – Dyer Harris VHF Channel: 71

- **CHANGES TO SAILING INSTRUCTIONS:** Notices and changes will be given to all yachts or their support boats verbally from the committee boat.
- **SIGNAL MADE ASHORE:** All signals will be made from the Committee Boat, none being made ashore.
- **SCHEDULE OF RACES:**

	Saturday	Sunday
Warning – Yellow Flag + Sound	10:00am / 2:00pm	10:00am
Prep – Blue Flag + Sound	10:05am / 2:05pm	10:05am
Start – Red Flag + Sound	10:10am / 2:10pm	10:10am
- **THE COURSE:** The course will be displayed at the Committee boat during the starting sequence. It will consist of a sequence of letters, each indicating the next mark to round. The letters will be displayed in red to round the mark to port, and in green to round to starboard. (See Map and Marks on page 2)
- **THE START:** The race will be started with 5-minute intervals between warning and prep, and between prep and start, using yellow, blue, and red flags. This changes RRS Rule 26. A sound may accompany each flag signal. However, Flag hoist is the ruling signal.

The start will be between an Orange Buoy and a Red Flag on the committee boat. A "Safety Buoy" may be positioned to leeward of the

- committee boat and considered an EXTENSION OF THE COMMITTEE BOAT. Passing between it and the Committee Boat or hitting it will be considered to have hit the committee boat.
- **RECALLS:** Recalls will be signaled in accordance with the racing rule 29. The sound(s) will be a horn.
- **CHANGE OF COURSE AFTER THE START:** A change of course will be signaled near the mark beginning the leg being changed by a race committee boat that will display Code flag "C", a sheet with the new mark letters, and the approximate compass bearing to the new next mark.
- **THE FINISH:** The finish will be between a blue flag on a signal boat and a drop mark to port of the signal boat in way of the course. The RC reserves the right to finish any race with a line set up anywhere on the course, in way of the course. In the event the finish is at a mark of the course, the mark of the course shall serve as the drop mark. This changes RRS 32.
- **TIME LIMIT:** The time limit will be 2.5 hours. Yachts failing to finish within 1 hour after the first yacht finishes, or after the time limit, whichever is later, will be scored DNF.
- **PROTESTS:** The race committee must be informed of intent to protest as the yacht finishes the race involved. Protests shall be written and lodged with the race committee within one hour after the last yacht's finish in the last race of the day.
- **SCORING:** The Low Point Scoring System, App. A of the Racing Rules, will apply, with 3 races scheduled. Completion of 1 race will constitute a series. The Chesapeake Log Canoe Handicap System will determine corrected order of finish.
- **ALTERNATIVE PENALTIES:** The one turn penalty of the class rules will apply to all infractions. This changes RRS Rule # 44.2
- **PRIZES:** The Awards ceremony will be held at the Rock Hall Yacht Club as soon as possible after Sunday's race



Joins page 13

THE MARKS: The turning marks will be a combination of government buoy/marks and/or two 4 ft. diameter orange racing marks, identified as follows:

- A** – 4 ft. windward club inflated mark
- B** – 4 ft. leeward club inflated mark
- M** – RN "18" south of Cliffs Point
- D** – RG Spar "CR" west of Spaniard Point
- S** – RN "16" west of Corsica River mouth
- P** – G Spar "3" Mouth of Langford Creek
- LC** – G Spar "LC" mid-channel Langford Ck / Chester River
- C** – R Spar "2" Mouth of Corsica River
- R** – GC "1" Mouth of Reeds Creek
- E** – RN "14" South of Ringgold Point
- G** – GC "1" Mouth of Gray's Inn Creek
- F** – GC "19" Comegys Bight and Cliff City

Red letters signify leave to Port

Green letters signify leave to Starboard

2 X = Twice around designated course.

Start/Finish line is OPEN for intermediate legs of course.